







Hytera DMR System Connection Settings


Hytera DMR Application Protocol

Hytera DMR Networks are controlled by WalkieFleet server over IP connection to the repeaters by means of Hytera DMR Application Protocol. WalkieFleet doesn't use Hytera SDK libraries which allows to have 64-bit service implementation and better flexibility.

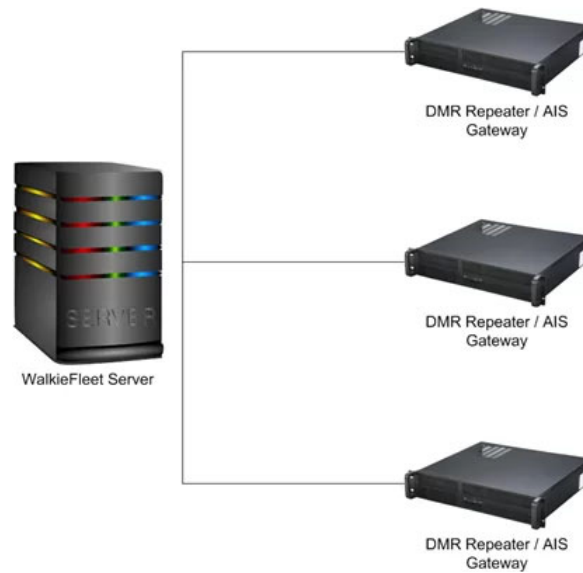
Features

-  WalkieFleet server can connect multiple Hytera DMR networks over IP
-  Private and group voice calls between WalkieFleet and DMR subscribers
-  Location Tracking
-  Text Message Exchange
-  Call Alert
-  Radio Check

Prerequisites

-  WalkieFleet Hytera DMR connection license is required to enable connection to Hytera DMR system

WalkieFleet DMR Connection Diagram

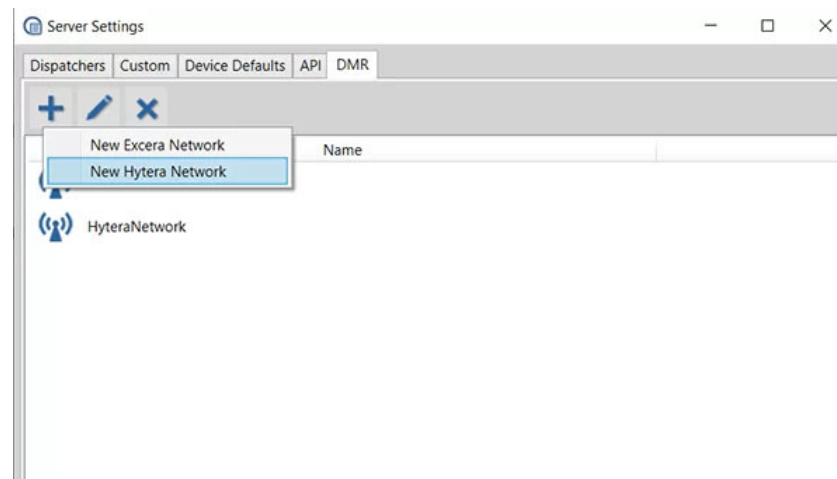


All Hytera DMR connection settings are done in Server Manager.

Hytera DMR Connection Settings

WalkieFleet server can connect multiple Hytera networks at the same time. Connection is established with master repeater.

Open Server Settings window / DMR tab to manage Hytera DMR connection settings.





Hytera DMR Connection Properties

General tab

A screenshot of the 'Hytera DMR Network' configuration dialog box. The window has a title bar with a close button. Inside, there are three tabs: 'General', 'Groups', and 'Presence Check'. The 'General' tab is selected. It contains a 'Name' field with the text 'HyteraNetwork'. Below this are several fields for ports, each with a label and a text input box. The fields are: 'Default Radio ID' (1), 'RRS Slot1 Port' (30001), 'RRS Slot2 Port' (30002), 'Call Slot1 Port' (30009), 'Call Slot2 Port' (30010), 'TMS Slot1 Port' (30007), 'TMS Slot2 Port' (30008), 'Location Slot1 Port' (30003), 'Location Slot2 Port' (30004), 'Voice Slot1 Port' (30012), and 'Voice Slot2 Port' (30014). At the bottom right are 'OK' and 'Cancel' buttons.

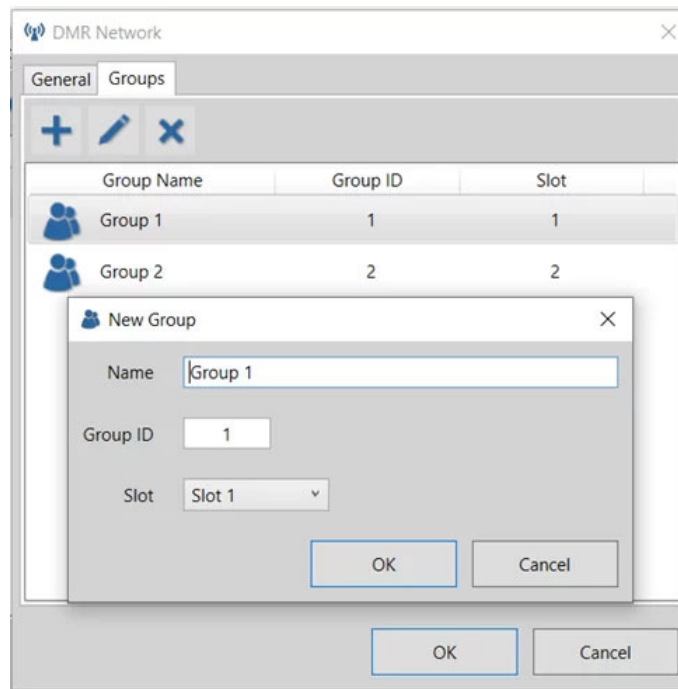
Field	Value
Name	HyteraNetwork
Default Radio ID	1
RRS Slot1 Port	30001
RRS Slot2 Port	30002
Call Slot1 Port	30009
Call Slot2 Port	30010
TMS Slot1 Port	30007
TMS Slot2 Port	30008
Location Slot1 Port	30003
Location Slot2 Port	30004
Voice Slot1 Port	30012
Voice Slot2 Port	30014

- Default Radio ID – Radio ID of connected Hytera master repeater. Default Radio ID is used by default to identify activities done from WalkieFleet to DMR system. This Radio ID is used if no other Virtual Radio ID is assigned to dispatcher or WalkieFleet user making call to DMR fleet.
- RRS Slot1 Port ... Voice Slot2 Port must be set to the same values as they are defined in connected Hytera master repeater.

Note! Default Radio ID should be unique in scope of all radio IDs assigned to DMR subscriber units.

Groups tab

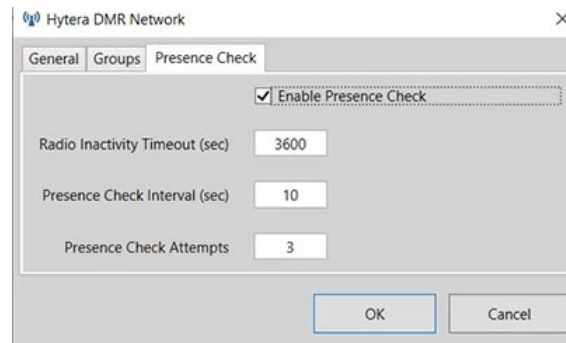
List of groups available to WalkieFleet server for voice communication through DMR connection.



- Group ID – Group ID as it is defined in DMR system
- Slot – slot number

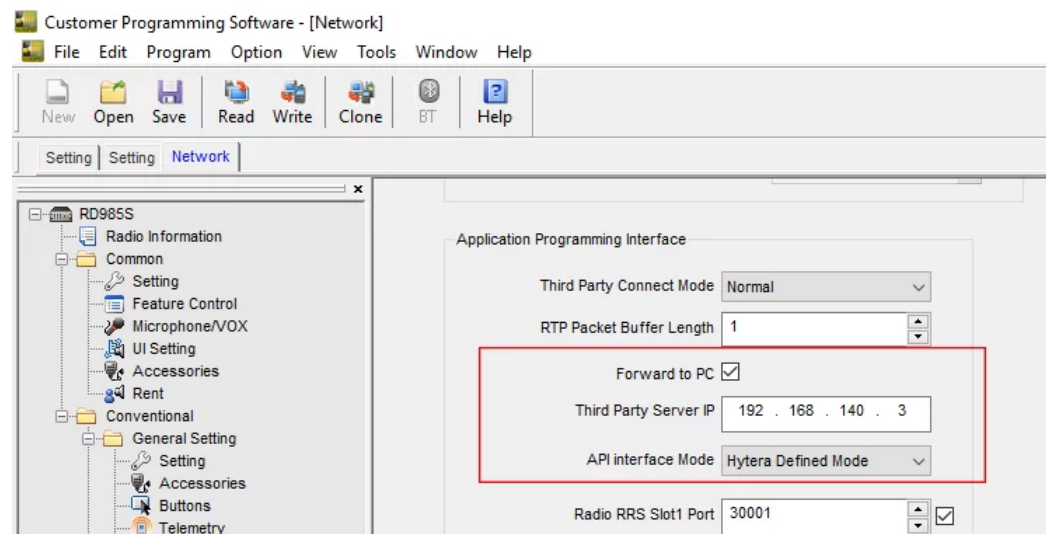
Presence Check tab

Enable presence check to track DMR user online/offline state.



- Radio Inactivity Timeout – Radio Check is sent to a radio if it presents no activity along inactivity timeout
- Presence Check Interval - Minimal time interval between radio checks. To eliminate radio channel stuck, WalkieFleet server does not send radio checks more frequently than specified in Presence Check Interval
- Presence Check Attempts - Number of attempts to send radio check to certain radio. In case of no response, server stops checking radio presence and supposes it to be offline

Hytera Repeater Settings



Radio Slot	Port	Enabled
Radio RRS Slot2	30002	Yes
Radio GPS Slot1	30003	Yes
Radio GPS Slot2	30004	Yes
Radio Telemetry Slot1	30005	Yes
Radio Telemetry Slot2	30006	Yes
Radio TMS Slot1	30007	Yes
Radio TMS Slot2	30008	Yes
Radio Call Control Slot1	30009	Yes
Radio Call Control Slot2	30010	Yes
Radio Voice Service Slot1	30012	Yes
Radio Voice Service Slot2	30014	Yes

- Forward to PC should be ON
- Third Part Server IP - IP Address of WalkieFleet Server
- API Interface Mode - Set to Hytera Defined Mode

Basic Setting

Radio ID: 1

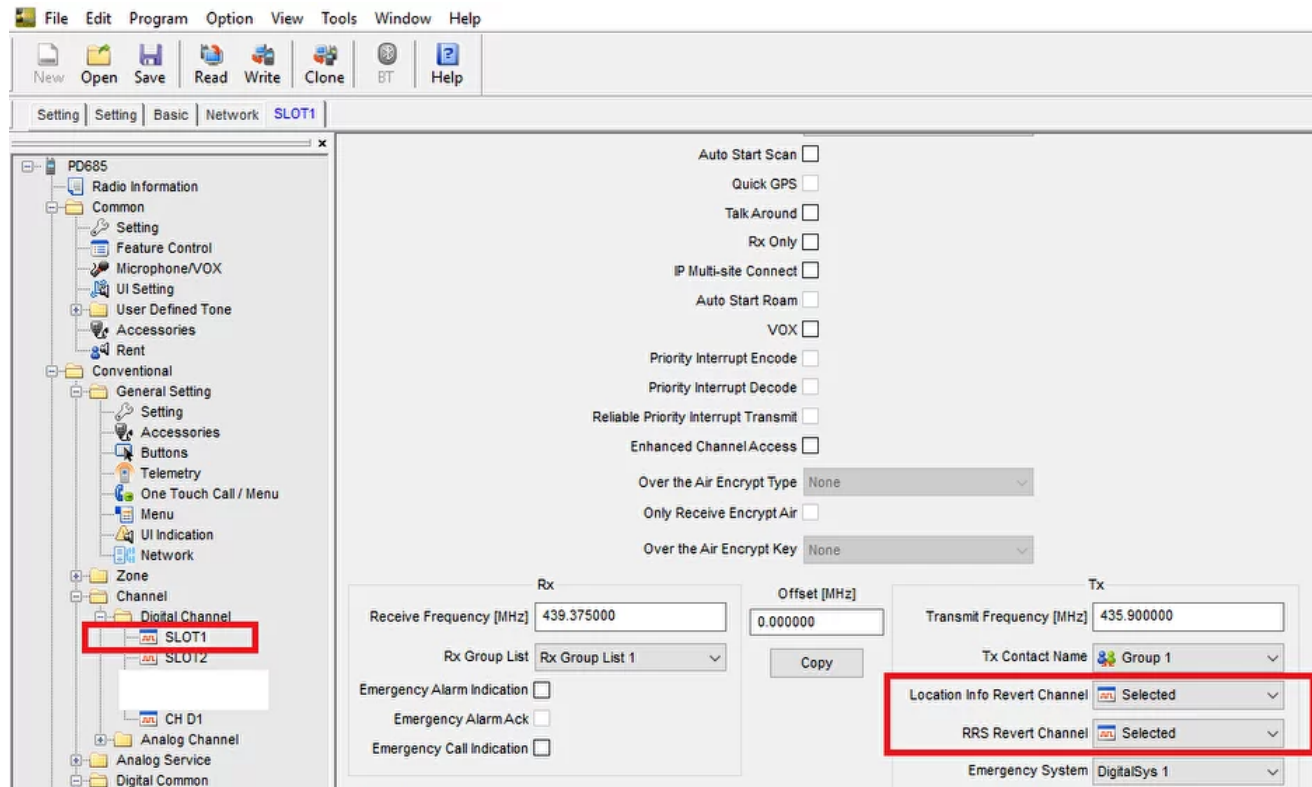
- Radio ID should be equal to Default Radio ID set in Hytera DMR connection properties

Hytera Radio Settings

Radio Services

Control Center ID	1
-------------------	---

- Control Center ID should be equal to Default Radio ID set in Hytera DMR connection properties

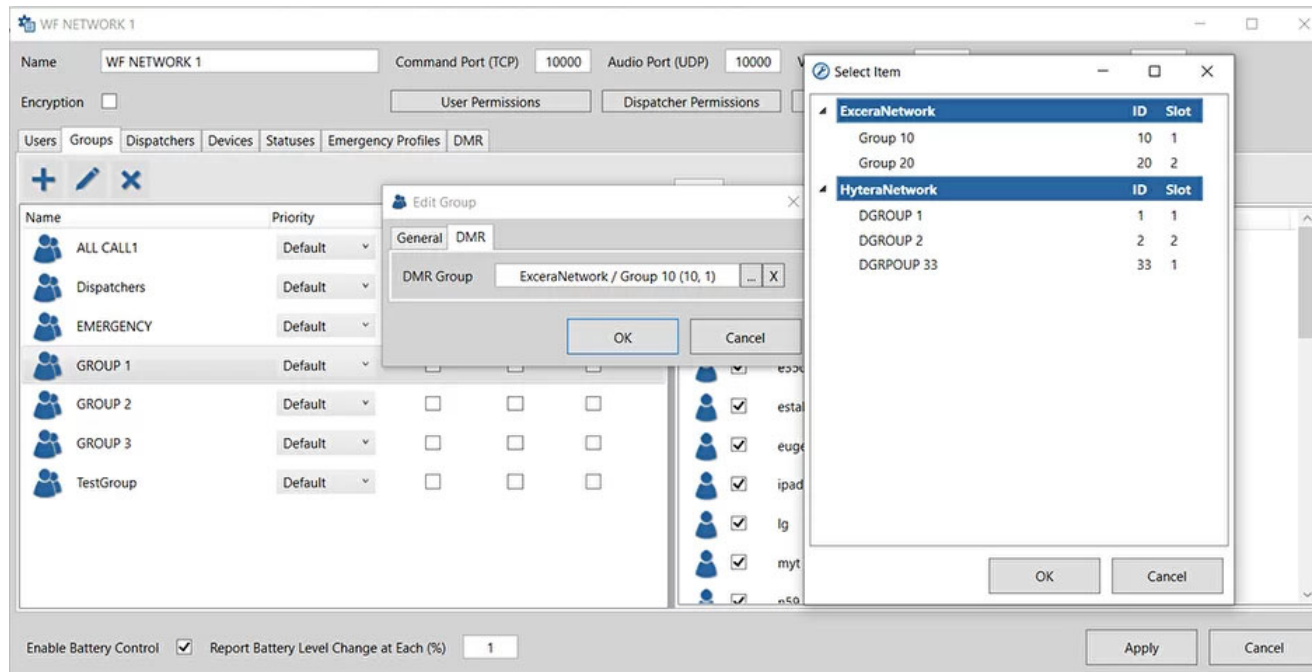


- Location Info and RRS Revert Channel should be set to Selected for correct operation

Group Association

DMR group becomes available in a WalkieFleet network when it is associated with certain WalkieFleet group.

Open Network Settings Window and add or open properties of a group to be associated with DMR group.

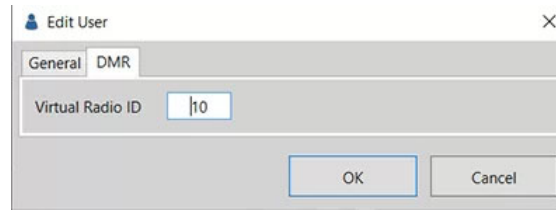


Switch to DMR tab and select corresponding DMR group.

Assign DMR Radio ID to WalkieFleet user

WalkieFleet user can be assigned with Virtual Radio ID representing one in DMR network.

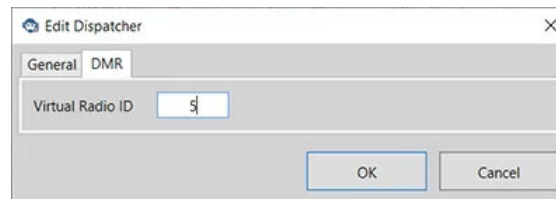
Virtual Radio ID is assigned in user properties window / DMR tab



Assign DMR Radio ID to WalkieFleet dispatcher

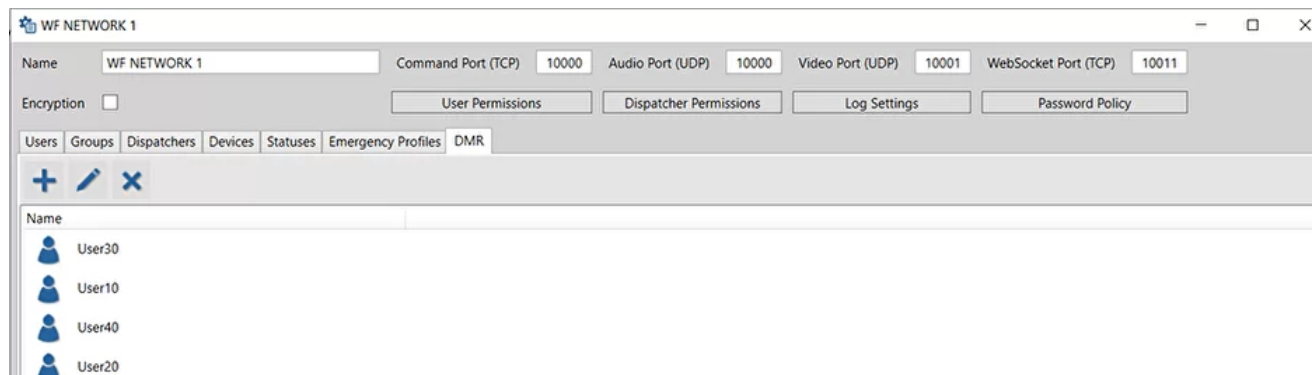
WalkieFleet dispatcher can be assigned with Virtual Radio ID representing one in DMR network.

Virtual Radio ID is assigned in dispatcher properties window / DMR tab



DMR Subscribers

DMR Subscribers may appear in user list of mobile client and dispatcher application with definite names. List of DMR subscribers is managed on DMR tab of Network Settings window.



Enable Battery Control ☒ Report Battery Level Change at Each (%)

ApplyCancel

© 2020 Walkie Labs, LLC

SOLUTION

Features
PC Dispatch Console
DMR Integration
Supported PoC Devices

FOR PARTNERS

Download
Partnership Opportunities
How to Buy
Free Trial

SUPPORT

Online Guides
Videos
Submit a Request
Contact Us